

# Business @ Lightspeed. atlantech|online

## What can your business do with unlimited Internet bandwidth?

Like everyone these days, your business data networking needs are growing quickly. Are you concerned about network bottlenecks as you add data, voice and video applications to your data network? Now you can get unlimited bandwidth that can be used for data networking, phone service or any other networking applications your business requires since your building is now connected with Atlantech Online's BWIS (Building Wide Internet Services).

Atlantech Online BWIS can be scaled for all size organizations and needs. Since your building is now connected, service can be turned on in a day. You'll get a simple Ethernet handoff...no special cards or routers are required. And, you'll no longer have to deal with large telephone companies and their long response times.

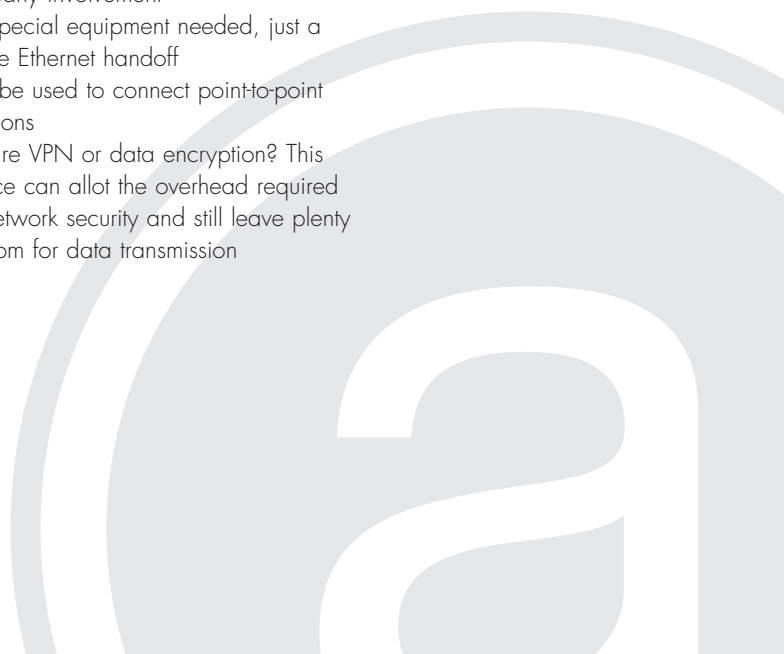
### Business Phone Service Save 20-70% off your phone service!

- Unlimited local and domestic long distance calling
- Standard Analog business lines
- Digital trunks (PRI interface)
- SIP phones available
- Toll-free numbers available
- Competitive international rates



### Broadband Internet Access

- 5 Mbps to 100 Mbps or more!
- Provision service in hours, not months
- Increase bandwidth quickly to meet unexpected demands
- Easy to support... no large telecom company involvement
- No special equipment needed, just a simple Ethernet handoff
- Can be used to connect point-to-point locations
- Require VPN or data encryption? This service can allot the overhead required for network security and still leave plenty of room for data transmission

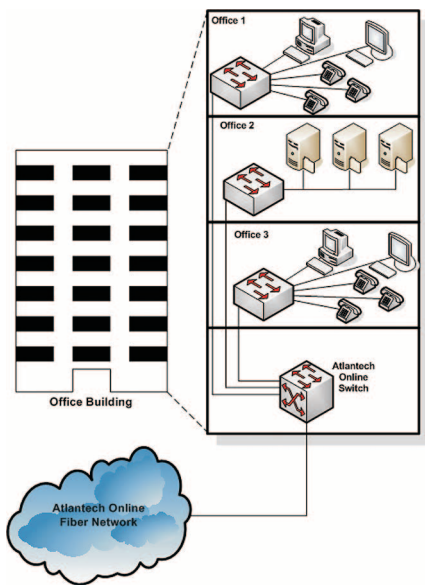


<b>BWIS</b>	<b>5</b>	<b>10</b>	<b>25</b>	<b>50</b>	<b>100</b>
Bandwidth	5 Mbps	10 Mbps	25 Mbps	50 Mbps	100 Mbps
IP Addresses	16	16	16	16	64*
Phone Lines**	64	128	128	256	512
Monthly Local Calling	Unlimited	Unlimited	Unlimited	Unlimited	Unlimited
Monthly Domestic/LD	Unlimited	Unlimited	Unlimited	Unlimited	Unlimited

\*IP allocation form required  
 \*\*May accommodate up to number of lines in chart

## How it Works

Instead of using dedicated, copper wires provided by the telephone company for T-1 or DS-3 services, Atlantech Online activates fiber that is installed in your building. We install equipment (typically on a mid-floor in the building), and extend your network cables to our switch (located in the building) and we turn on the service! Connectivity can be used for phone in addition to Internet services.



## Benefits

Why should you switch to Atlantech Online's BWIS? Because your data networking needs are growing and the giant telecom companies aren't responsive to your requests. You need fast, reliable network service that can be installed quickly and can be delivered quickly. You need to get ALL your data requirements: data, voice, and video, met by one reliable source! And that source is Atlantech...doing Business @ Lightspeed!

## Proven Reliability Backed by Premier Service

Atlantech's stable, proven access technology gives you a consistent, high-speed connection to insure that your communications are up and running 24x7x365. You can change local or long-distance features on demand; add, delete or modify email accounts instantly; view, pay and even troubleshoot online, all at your convenience and on your schedule, without ever having to pick up a phone.

Of course we'll always be available should you ever need us. All of Atlantech's affordable services are backed by our unmatched customer support. We believe that by providing the communications services you need at a price you can afford, we can be the last communications company your business will ever need!

## BundlePacks

Atlantech Online offers bundled Internet services to complement BWIS services.

- MailPack: Bundle of email accounts that includes mail storage, spam tagging, anti-virus service, webmail, POP and IMAP capability.
- WebPack: Ample web site storage with control panel access to control web content. Available on Windows or Unix servers. Includes multiple email accounts and Domain Name services.
- Backup Pack: Use the service for off site backups or point-to-point backups between two lit buildings.
- SecurePack: Bundle in a managed firewall to secure LAN, WAN and voice networks.



**atlantech|online**  
 broadband · voice · hosting

1010 Wayne Avenue  
 Silver Spring, MD 20910

301.589.3060  
 301.589.3936 fax  
 800.256.1612  
 sales@atlantech.net

**www.atlantech.net**